

Mac OS

This instruction manual is for the installation of the SSL-VPN application for Mac OS devices.

[Notes]

- 1, If a **previous SSL-VPN application (Cisco AnyConnect)** has been **installed**, please **perform a overwrite installation**.
- 2, During the process, you may be **asked to choose between "cancel" and "ok"** when the screen transitions. In such a case, please **select "ok" for all the options**.
- 3, During the process, you will be asked to enter the **"name" and "password" of the administrator of the PC in question**. Please make a note of them beforehand.
- 4, When you have **finished** using the equipment, be sure to **disconnect it**.

[Initial setup section]

(1) Access the following URL with a browser
<https://vpn241.otaru-uc.ac.jp/>

小樽商科大学 SSL-VPN

OTARU UNIVERSITY OF COMMERCE

ログイン

グループ: student

ユーザー名:

パスワード:

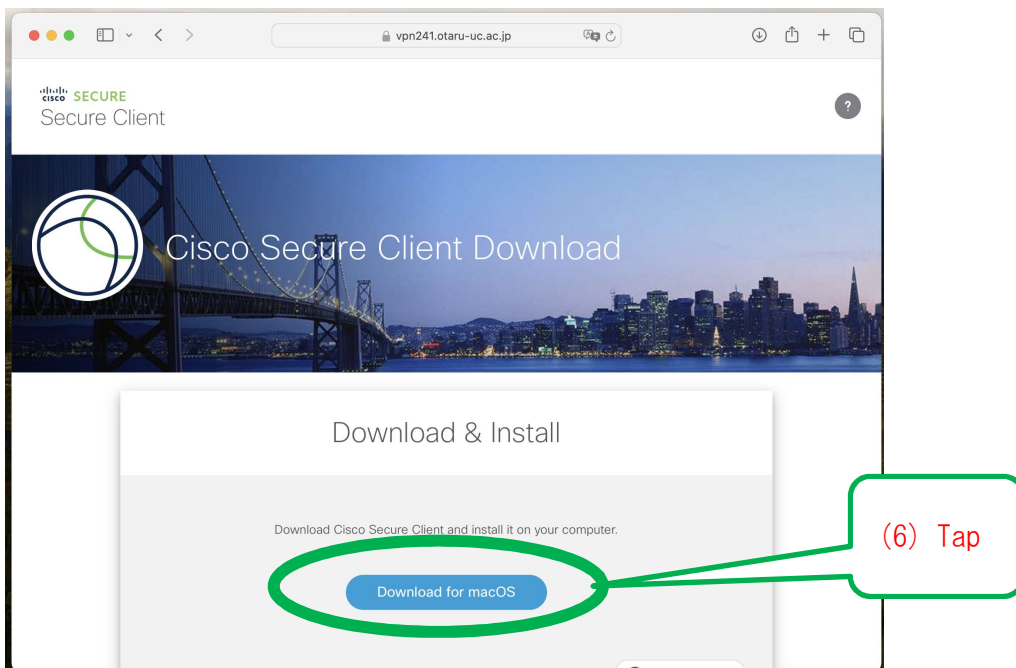
ログイン

(2) Group space:
Select the appropriate item from the following
Student: select "Student"
Teacher: select "Teacher"
Staff: select "Office"

(3) User name space:
Enter your "Network ID"

(4) Password space:
Enter your "Network Password"

(5) Tap



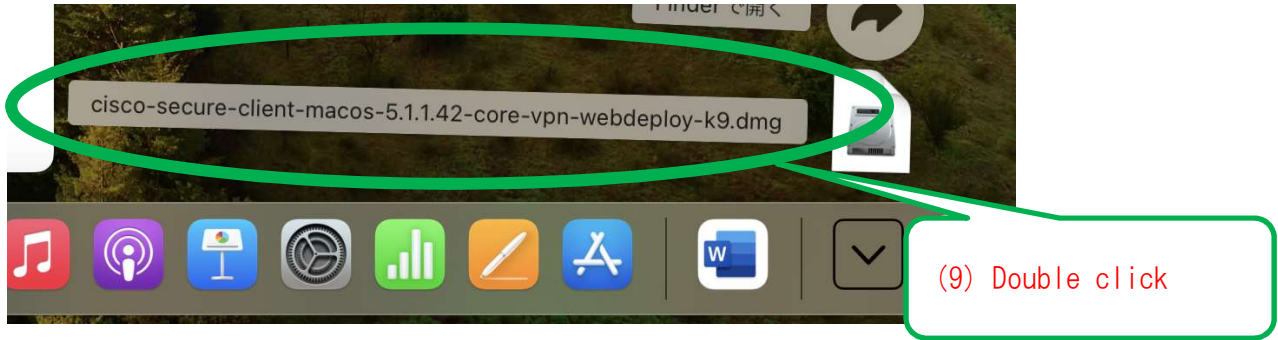
*If the following screen is displayed



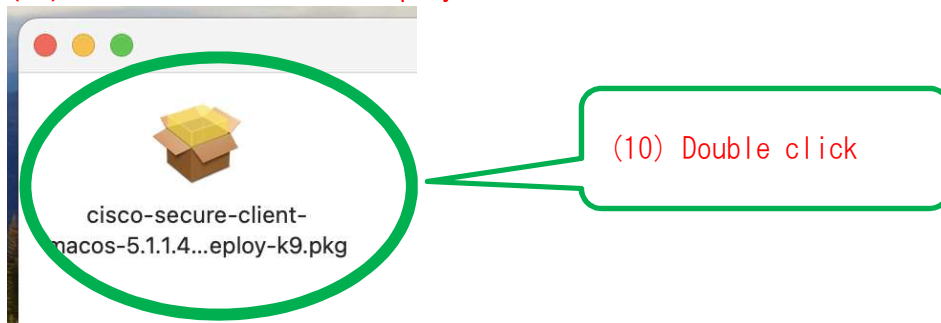
(8) Click “Download”.

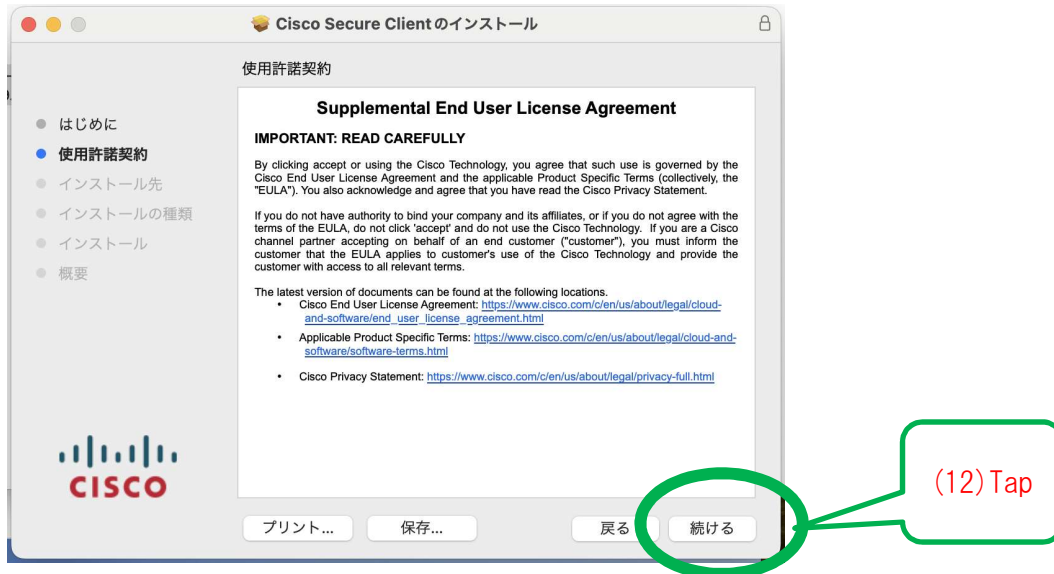


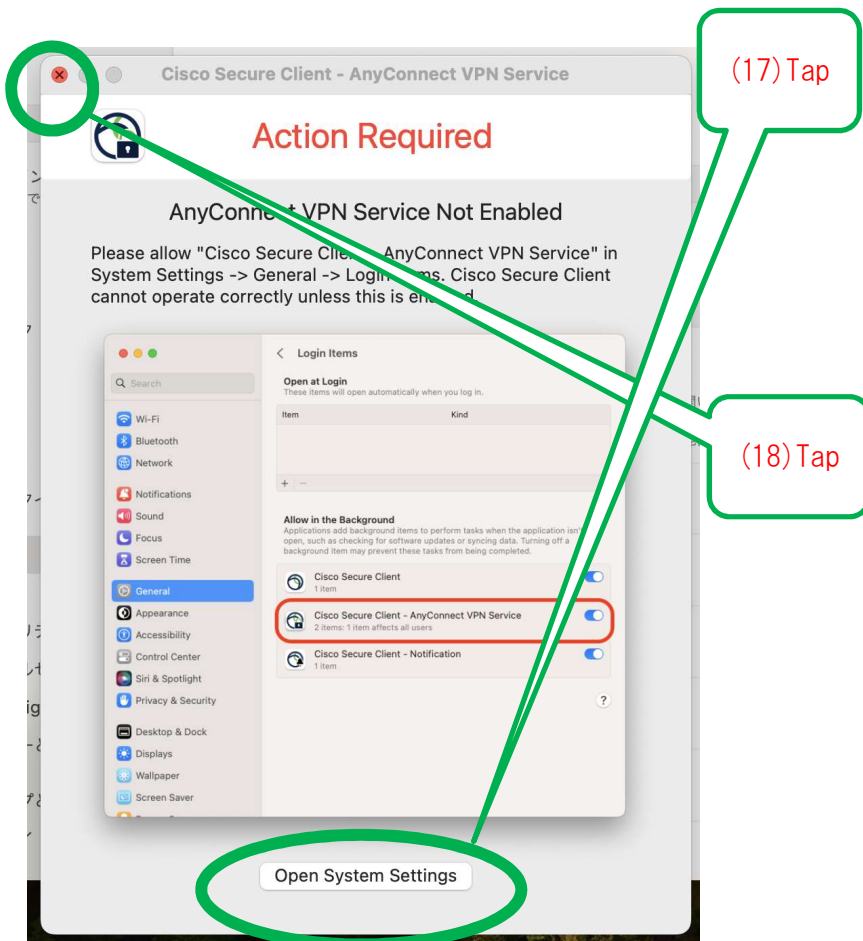
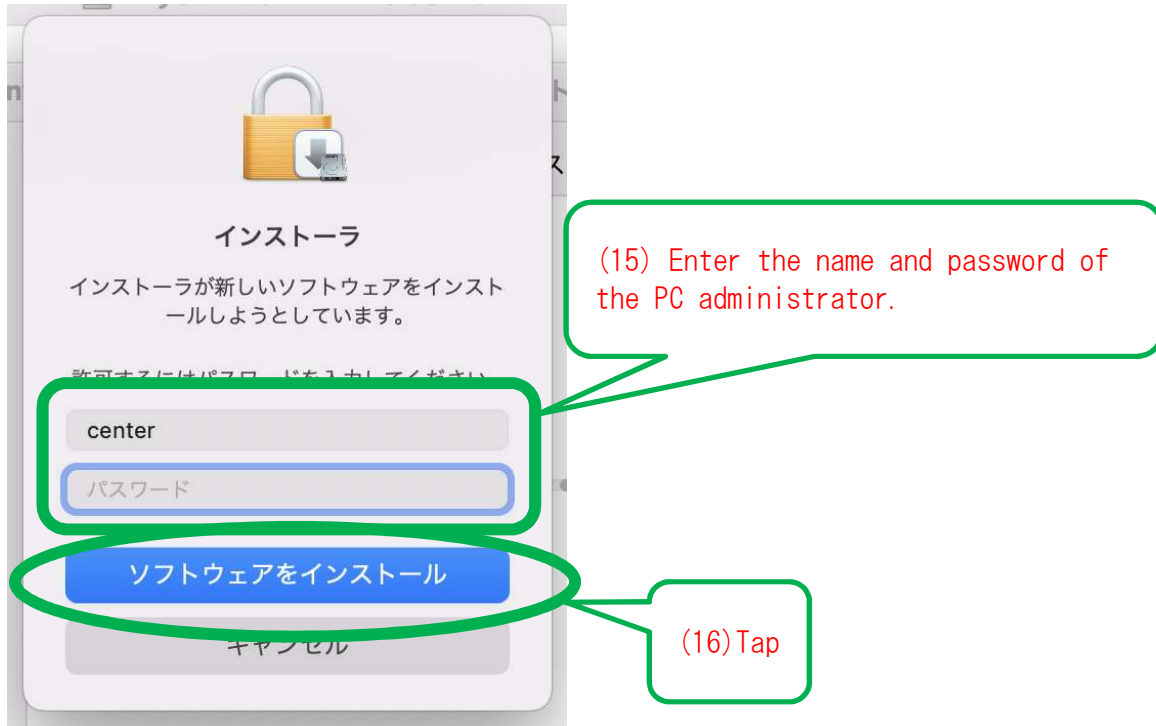
(9) Double-click the downloaded file.

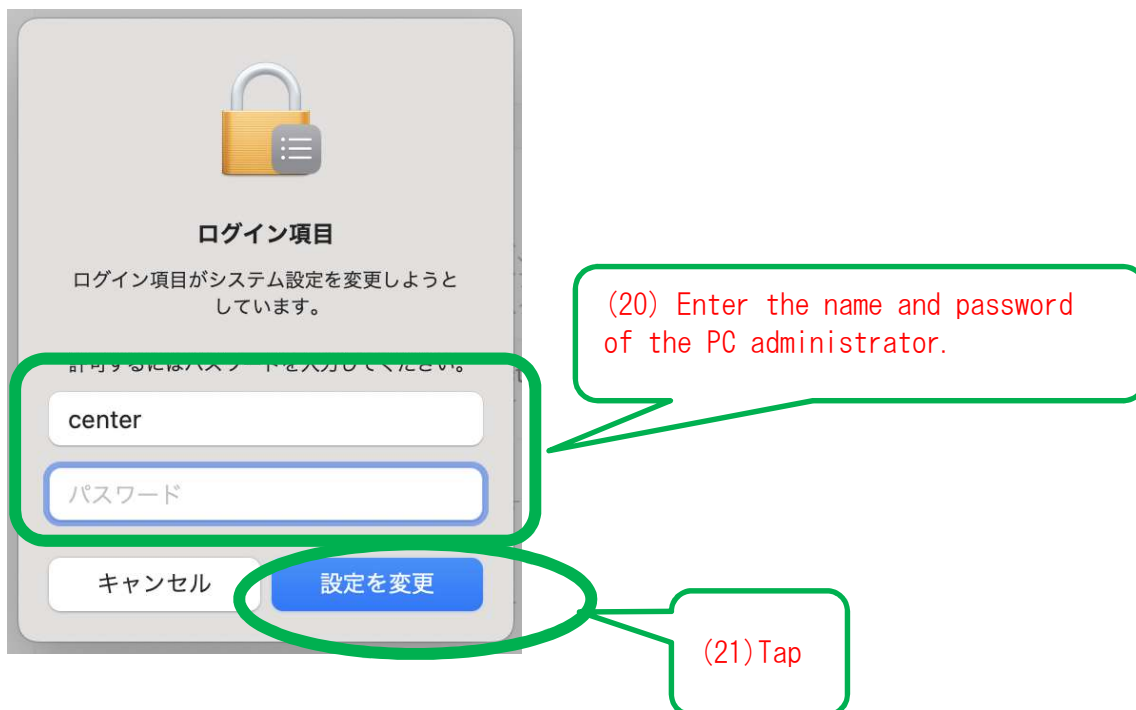


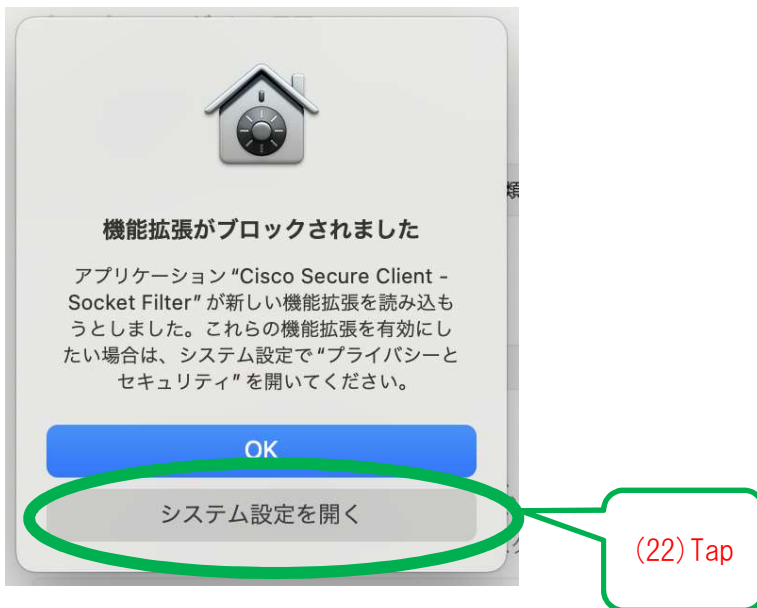
(10) Double-click on the displayed file



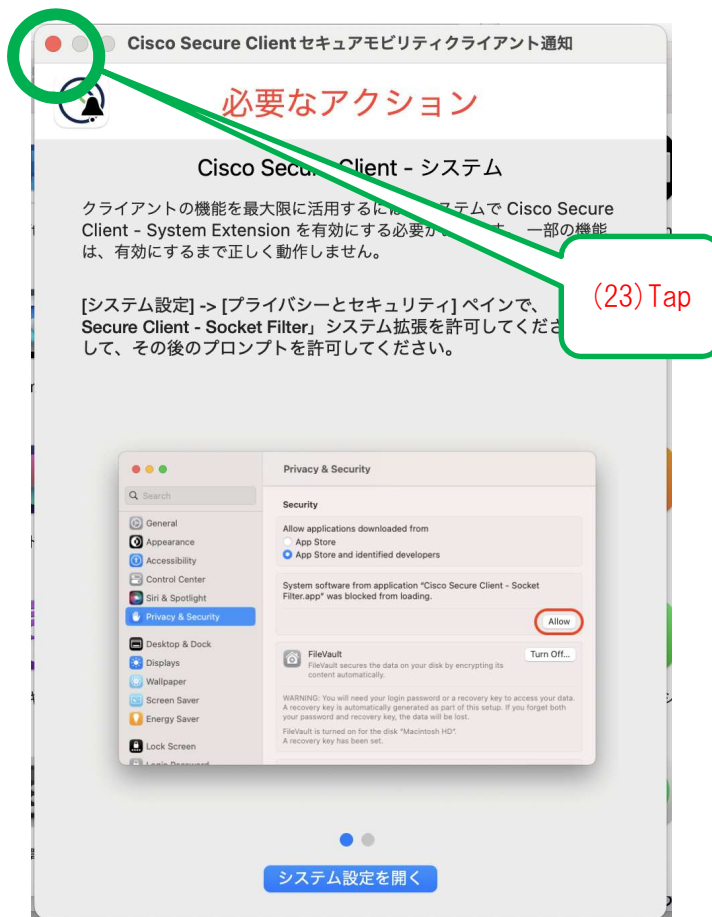


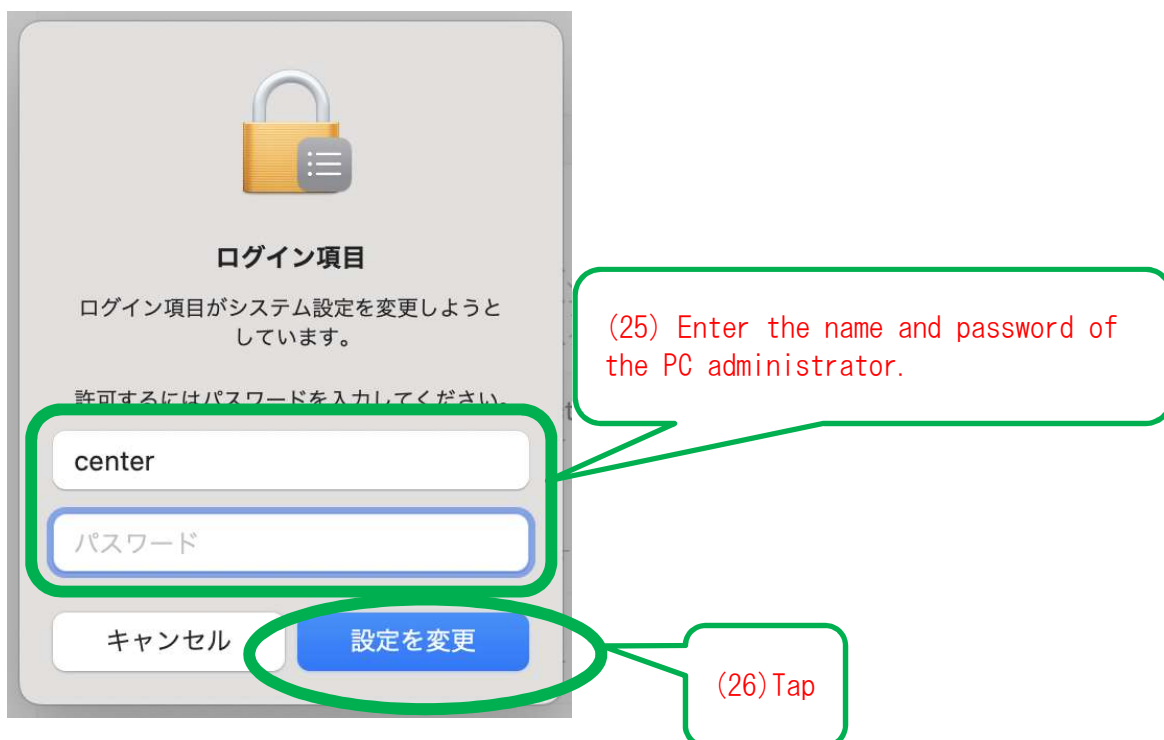
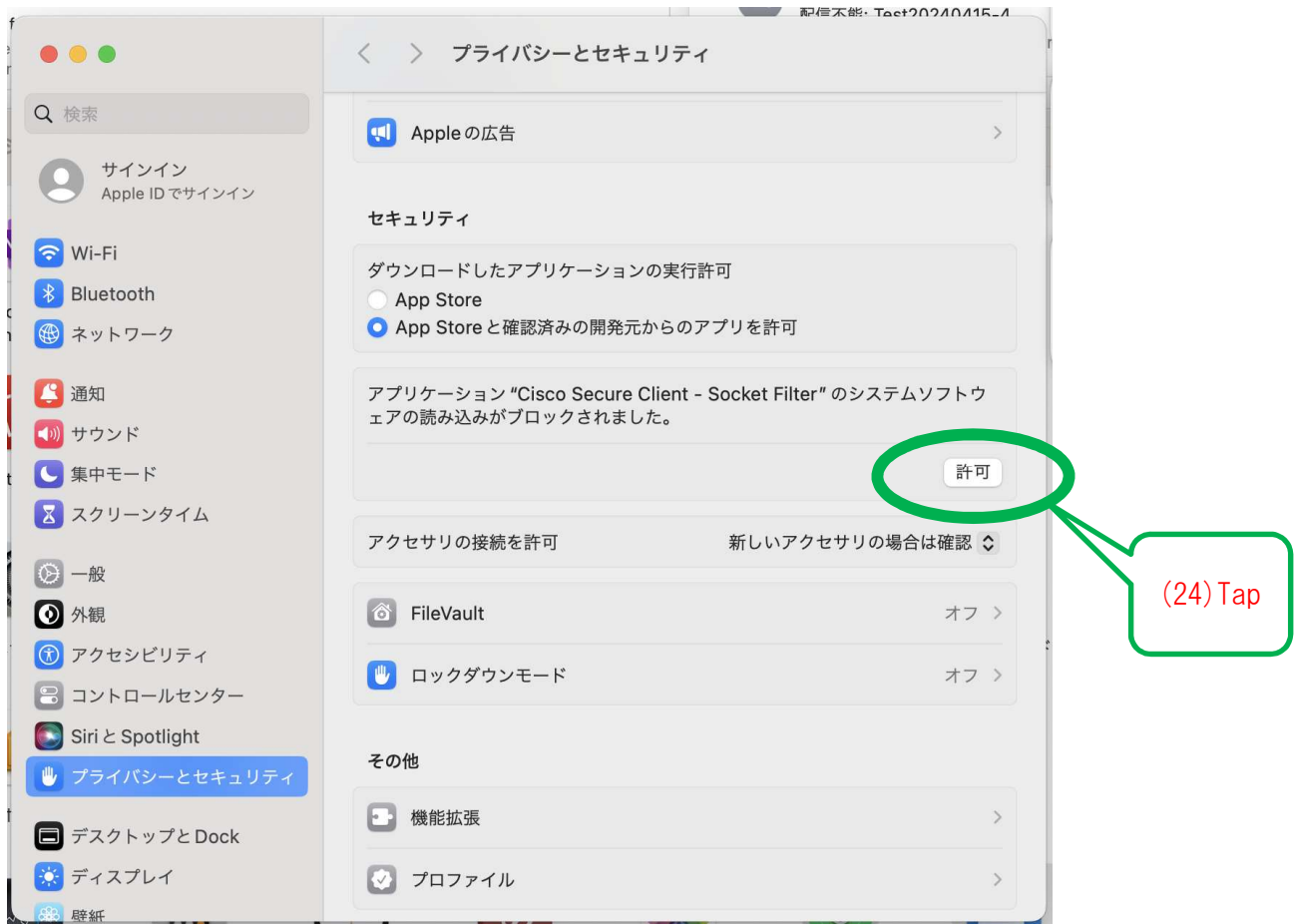


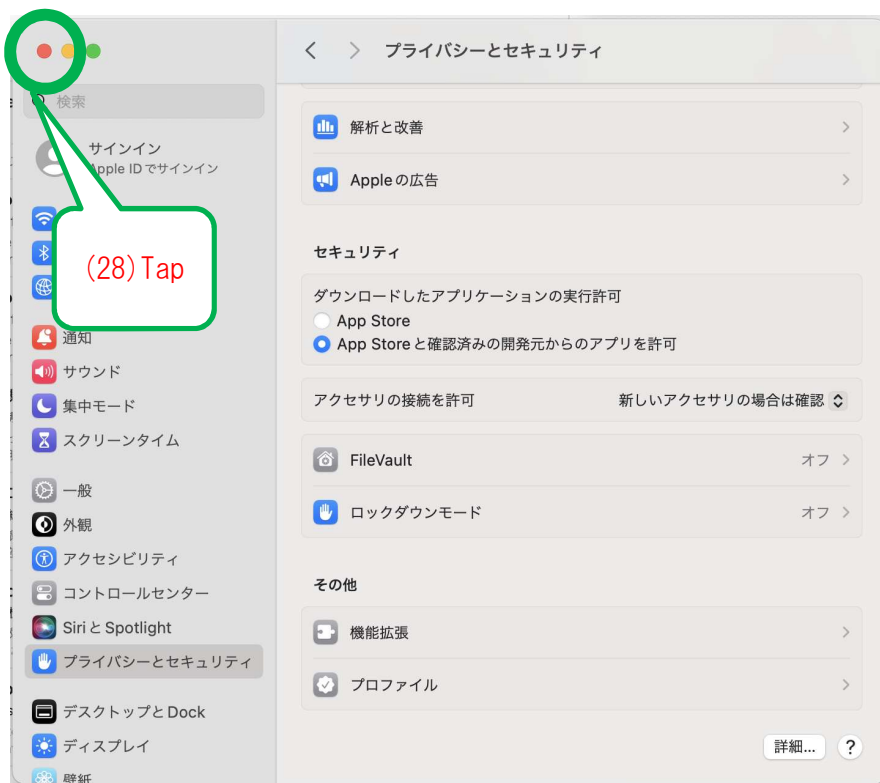


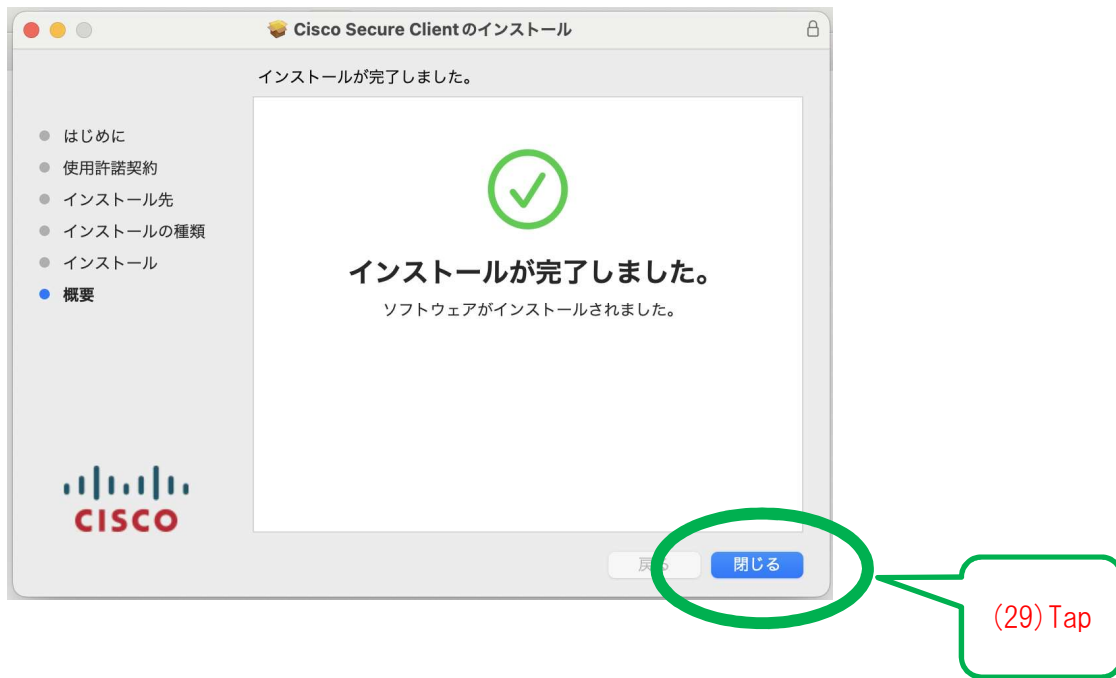


*If the following screen is displayed









(31) Completed

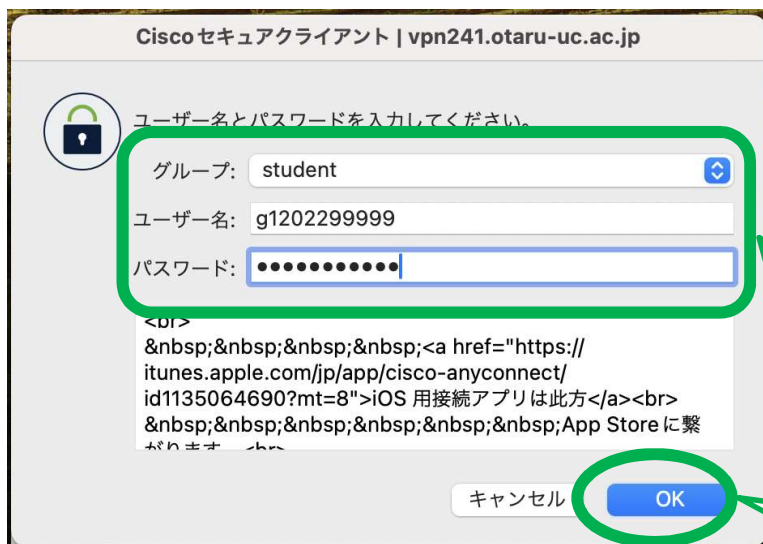
[Connections section].

(1) Launch the application

(2) Enter :“vpn241.otaru-uc.ac.jp”



(3) Tap



(4) Group space

Select the appropriate item from the following

Student: select “Student”

Teacher: select “Teacher”

Staff: select “Office”

(5) User name space:

Enter your “Network ID”

(6) Password space:

Enter your “Network Password”

(7) Tap

(8) Completed

[Cutting operations section]



(2) completed